

# Exercise Evaluation Report

## 2024 AUCKLAND SAREX

**Location:** Hunua Ranges - Auckland

**Date:** 31/10/2024

**Report version:** 1

**Evaluator(s):** *Kip Mandeno – IMT Evaluator*

-

# Contents

Executive Summary .....	2
1. Recommendations .....	3
2. Introduction .....	4
3. Background .....	5
4. Evaluation Methodology .....	8
5. Findings .....	10
6. Conclusions.....	11
7. Appendix .....	12

## **Executive Summary**

This SAREX was held over three days starting in Auckland at midday with the aim to carry out reflex taskings and move to the Watercare North Depot in the Hunua Ranges to establish the ICP for the SAREX. The exercise involved Police, Land Search and Rescue, Airforce Civil Defence Response Group and AREC.

This SAREX was organised by Tamaki Makaura SAR and IMT staffed by both Police and LSAR Volunteers. Field teams were a mix of Police, Land SAR & Airforce personnel.

The format of the exercise was a typical search style for a missing party overdue by several days in both tracked and untracked terrain. The nature of the terrain and accessibility by vehicles around the search area made for an efficient process to get field teams onto taskings.

The objectives of the SAREX were well met and provided an enjoyable and safe SAREX.

## 1. Recommendations

1. Continue to develop multi-agency SAREXs to grow capacity and relationships in the Auckland area.
2. Consider including other Land SAR groups involvement in the SAREX to foster wider relationships in the volunteer SAR sector.
3. Continue ongoing development of D4H and other technologies to support SAR and the IMT.
4. Continue the mentoring of both IMT & field team members to develop them in the team to ensure continuity of the team.
5. Look at adding objectives in the IAP relating to the IMT to provide strategic direction during the operational period.
6. Revise the name of the SAR Response Manager to that of the Teams Coordinator sitting under the Operations Role of the IMT.

## 2. Introduction

The Auckland SAREX is an annual feature on their SAR calendar and has typically run traditional format SAREXs with a lost person party/search format. The Hinua Ranges are a very popular recreation area with numerous tracks, campsites and mountain bike tracks.

With easy accessibility to nearby Auckland and relatively complex bush terrain, the ranges are a likely place for SAR operation. The area is used by many school groups and a wide range of recreational users, the need for the local SAR teams to be familiar with the area is very important to forming an adequate response.

The location and terrain provided an ideal location for the SAREX appropriate to the objectives of the SAREX.

## 3. Background

### 3.1 Background to the Exercise

SAREXs have been conducted by Auckland Police to test and maintain readiness for SAR events that may occur in a wide range of terrain. Like many of NZ SAR areas, the Auckland Police District covers a vast range of terrain from coastal environments to temperate bush.

### 3.2 Dates, location, organising agency(s), key people

- **Date of Exercise**  
31/10/2024
- **Location**
  - Hinua Ranges - Auckland
- **Exercise Director**
  - Steve WEBB (NZ Police)

### 3.3 Participating organisations

- NZ Police
- Land SAR Auckland,
- AREC
- Airforce Civil Defence Response Group
- Westpac Helicopter Auckland

#### Other Stakeholders

- Watercare (Access and Facilities)
- Auckland Regional Council (Access and Facilities)
- Auckland Emergency Management (SAREX Observation)

### 3.4 Exercise aim

- To provide a real time SAR Exercise that used a wide range of skills and learning objectives.

### 3.5 Exercise objectives

- A fairly broad number of objectives were set for the Exercise; however, each objective was applicable to different assets so was achievable in the SAREX timeframe.

<u>1</u>	Implement the role of SAR Response Manager being a liaison between AREC (Comms) and Land SAR. Ensuring the IMT are recording all the relevant details received from the field teams.
<u>2</u>	Test the readiness plan for the Hunua's checking locations and comms plans put in place prior to the exercise.
<u>3</u>	Test TRRT (Tactical Rope Rescue Team) capability working with external agencies including Westpac.
<u>4</u>	Test field teams' ability to deploy in the field overnight and give them the opportunity to revise their skills in processing a scene, search methods, tracking, navigation, radio communications and first aid.
<u>5</u>	Implement / review a communications plan for the Hunua's working with AREC and Land SAR members.

Objectives from the Exercise Planning document

### 3.6 Exercise Events

Three phases were set for the SAREX starting on Thursday Afternoon concluding on Saturday afternoon. The venue was the North Depot of Watercare in the Northern Hinas and was a suitable venue for the Exercise and would be effective in an operation.

The detail of each activity is enclosed in the attached document but were made up of.

- Day One –
  - Exercise Initiation
  - Deployment of Police Sar on Hasty Tasks
  - Establishment and first Operational Period of the IMT
- Day Two –
  - Deployment of Auckland LSAR, Police & Airforce Staff into the field
  - Overnighting in the field
  - Second Operational Period of the IMT
  - Communications by AREC
- Day Three –
  - Completion of SAREX with a rescue & helicopter tasking
  - Third Operational Period of the IMT
  - Demobilization of field teams and
  - Disestablishment of SAREX



## 4. Evaluation Methodology

### 4.1 The agreed outcomes of the evaluation activity

Carry out observation of the Incident Management team during the SAREX and outcomes from the field teams.

### 4.2 Evaluation scope

Evaluation of the SAREX was carried out at the ICP against the set objectives and measured against the KPIs developed for the SAREX.

### 4.3 Aspects of the exercise observed, what was not observed

All aspects of the SAREX were observed during the course the SAREX from the Initial Response to the disestablishment of the Exercise. No field assessment was carried out however the actions, communications and deliverables from the field teams formed part of the evaluation.

### 4.4 The process followed in preparing and submitting the report

A comprehensive and detailed plan for the exercise was reviewed covering.

Section	Page
SARex Scenario	3-5
SARex Objectives	6
SARex KPI's	7
<b>First Operational Phase</b>	8
Initial Action	8
Injects 31st	9
ICP	9
Communications	9
Field resources	9
Administration resources	10
Weather	10
Locating and Processing the LKP	10
Witness Interviews	11
Injuries	12
<b>Second Operational Phase</b>	14
Injects 1st	15
Field resources	15
Witness interview	15
Next of kin	16
Injuries	17-18
<b>Third Operational Phase</b>	18
Lost Party	19
Demobilisation	20
Contingency	20

Reviewing activities on the day against this document provided a clear and detailed evaluation process. The size and location of the SAREX also provided an opportunity to talk to participants and planners throughout the weekend.

There was no need to follow up or carry out investigations outside of the SAREX.

## 5. Findings

The purpose of the SAREX was to operate a real-time search event with the call out going to the Police SAR in Auckland at the Police SAR store based at the Harbour Bridge Station.

An initial response was put in place utilising the Police SAR team to carry out processing of the vehicle and gathering of intel. The SAREX was well briefed on Friday with an efficient deployment of 9 teams due to planning and taskings organised the day prior by the IMT.

The IMT formed an effective team with an experienced Police IMT member acting as a mentor and coach to assist with any issues arising and to maintain the direction of the IMT over the exercise.

Throughout the day information was fed into the IMT at suitable intervals to ensure the exercise was as realistic as possible. Sightings, clues and other intel were pitched at the right level to ensure a balance of challenge and achievability.

A solid and detailed communication plan was developed by AREC with multiple channels stood up allowing teams to swap channels when communications were poor or difficult in the relatively complex terrain of the Hinuas. AREC entered the communications into SAR Track in a separate room and this was picked up by a dedicated person in the IMT to manage and feed into the IMT. This was a specific objective in the SAREX and achieved at a high standard and proved effective in avoiding missed communications and intel. This role was identified as the Response Manager however this role is used elsewhere in CIMS and would recommend using the term Teams Coordinator sitting under the Operations Role of the IMT.

Alongside SAR Track, the IMT ran the operation through D4H which proved a far simpler and more intuitive tool for tasking and maintaining the operational log than other software to date. The use of D4H was new to most persons in the IMT and it was quickly learnt by users with little training. This was not an objective of the exercise but did not detract from it and proved an appropriate tool for the exercise.

Throughout the exercise, the IMT tracked teams effectively keeping boards updated via live tracking, traditional map marking and on whiteboards. This was a KPI of the exercise and was achieved to a high standard with transport often being organised in advance of teams making it to the road end and having to wait.

Intel, clues and other information were sufficiently recorded throughout the operation using whiteboards. This was a KPI and was met to a good standard. An improvement would be to dedicate a person to recording this data digitally so that it can be accessed easily in the future if an operation is ongoing or not successful. This person would act in support of the Intel Role and would be responsible for tracking intel so that is actioned followed up and outcomes fed to the Intel Role.

Field teams were well-equipped and communicated effectively throughout the operation swapping channels as needed to communicate with the SAR base. Some teams had new Team Leaders or members who were suitably mentored in the field.

The Auckland SAR Readiness plan proved effective and was utilised at the outset of the operation. This document is well laid out with generic planning tools and a specific Huna section which will make the document easy to update if changes occur in an area.

The only task not achieved was a detailed Safety Plan by the IMT for the exercise, however, a suitable overarching plan formed part of the SAREX Planning and was sufficient for the exercise. Alongside this, the Readiness Plan also included a safety and response plan and could have been used if necessary. It is more likely that this would have been achieved if it was an objective of the IMT recorded on the IAP in the First Operational Period.

The exercise achieved the desired outcomes of the SAREX and all KPIs.

## **6. Conclusions**

The SAREX was well-run and well-coordinated by all parties involved and the venue provided ample accommodation and a suitable ICP.

A highly detailed and well-considered SAREX plan led to a successful weekend with all personnel actively involved throughout the weekend. The SAREX provided plenty of learning opportunities for all involved and to test communications, software and processes effectively.

## 7. Appendix

REFER: Planning documents attached



# Auckland Search and Rescue Exercise 2024

## Hunua Rangers



Scenario

Operation Hunua

**Exercise Control**



The Hunua Ranges cover about 400 square kilometres along the south eastern side of the Auckland region. Most of the area lies within the Waharau Regional Park, which has more than 450 species of native plants.

Hiking tracks in the park pass through dense native forests to high ridge lines that offer long range views to the city or the Firth of Thames.

One of the popular shorter walks is to the impressive Hunua Falls. Swimming holes in the numerous streams and rivers offer a refreshing break on a more challenging hike.

Several camping areas, equipped with the basic necessities, provide scenic accommodation. Bookings are through Auckland Regional Council.

Mountain bikers are welcome in the rangers and some exciting trails have been built by biking enthusiasts working with the regional Council.

Both the Mangatawhiri and the Mangatangi dams offer rainbow trout fishing along the face of the dams.



## Contents

SARex Scenario	Page 3-5
SARex Objectives	Page 6
SARex KPI's	Page 7
<b>1. First Operational Phase</b>	Page 8
• Initial Action	Page 8
• Injects 31st	Page 9
• ICP	Page 9
• Communications	Page 9
• Field resources	Page 9
• Administration resources	Page 10
• Weather	Page 10
• Locating and Processing the LKP	Page 10
• Witness Interviews	Page 11
• Injuries	Page 12
<b>2. Second Operational Phase</b>	Page 14
• Injects 1 <sup>st</sup>	Page 15
• Field resources	Page 15
• Witness interview	Page 15
• Next of kin	Page 16
• Injuries	Page 17-18
<b>3. Third Operational Phase</b>	Page 18
• Lost Party	Page 19
• Demobilisation	Page 20
• Contingency	Page 20
• Master copies of injects for exercise control only	





## Scenario

### Operation Hunua

31<sup>st</sup> October – 3<sup>rd</sup> November 2024

#### Missing Person / Injured

Scenario is that 3 teachers have entered the Hunua Rangers leaving their vehicle at the Upper Mangatawhiri campsite. Their intentions are to explore the Hunua Rangers and visit all the campsites and huts for an upcoming school tramp / camp. They entered the Hunua's on Sunday the 27<sup>th</sup> October 2024 and were due out on Wednesday the 30<sup>th</sup> October 2024.

On the Wednesday the 30<sup>th</sup> one of the teacher's experiences chest pains and shortness of breath possibly requiring medical attention. This member is slowing them down so they make the decision to send one of the party to notify the school and family that they will be out late. They have no mobile phone coverage at this location. They do have a PLB but don't think it necessary to activate as the teacher was stable.

The teacher that heads off seeking help slips off track down a steep bank. This member has a PLB and activates it after the slip as they can't access the track, requiring line team and Westpac.

The school contact police on Thursday the 31<sup>st</sup> after the teachers fail to return. They were due to be back at the school at approximately 1000hrs. The school passes on very limited information other than the teachers details and rough intentions. The school advise comms that the teachers had made contact with the rangers to find out more about the huts and facilities.

The school also gave one of the teachers a PLB that is registered to the school. Police communication takes the information and follows standard operational procedures, calling



the on call SAR coordinator and informing them of the 1L job in the Hunua's. Police communication takes any instruction from SAR and notes them in the job text (they do not act on any of the requests from the SAR coordinator). The inject will manage this.

Police communication will update the I/C with tasking eagle and that they have located one of the teachers' vehicles at the Upper Mangatawhiri campground.

The scenario will allow for all police staff to either meet at the ICP or at bridge base. It will give the IC a realistic example of needing to manage incoming staff in a staggered response. The scenario will be staged allowing the IC to set up an IMT on the Thursday night using a few LandSAR members. This will allow the IMT to have all tasking ready to go for a briefing first thing on Friday the 1<sup>st</sup> November 2024.

The exercise will allow for 3 Operational Phases with a hand over of IC and IMT staff. It will allow for the implementation of a readiness plan, set up, planning and tasking from within the IMT.

The exercise will allow the field teams to work in an extended search area, operating in the bush and staying out for two nights.

If IMT task a team to search the vehicle day 1 they will locate the teachers' intentions, exploring at the campgrounds and huts. Timings will be important as we want the field teams that arrive on Friday morning to be tasked with this. In the event we get the use of the NH90's they will be tasked to drop the teams off at these locations.

Alternatively, if IMT make the enquiries with the Rangers they will be informed of the teachers' intentions and be given an email outlining their plans.

This scenario will allow for the setup of repeaters and testing of radio use in the area. This SARex a large emphasis will be placed on Comm's.



## SAREx Objectives

<u>1</u>	Implement the role of SAR Response Manager being a liaison between AREC (Comms) and LandSAR. Ensuring the IMT are recording all the relevant details received from the field teams.
<u>2</u>	Test the readiness plan for the Hunua's checking locations and comms plans put in place prior to the exercise.
<u>3</u>	Test TRRT (Tactical Rope Rescue Team) capability working with external agencies including Westpac.
<u>4</u>	Test field teams ability to deploy in the field overnight and give them the opportunity to revise their skills in processing a scene, search methods, tracking, navigation, radio communications and first aid.
<u>5</u>	Implement / review a communications plan for the Hunua's working with AREC and LandSAR members.



## SAREx KPI's

<u>1</u>	<ul style="list-style-type: none"> <li>• Manage the communication channels between AREC and LandSAR</li> <li>• Manage and assess field teams' communication with SAR base</li> <li>• Manage the field team boards and clue boards working with the IMT</li> </ul>
<u>2</u>	<ul style="list-style-type: none"> <li>• Response plan contains accurate and adequate information.</li> <li>• Correct and sufficient resources</li> <li>• Aligns with health and safety requirements.</li> </ul>
<u>3</u>	<ul style="list-style-type: none"> <li>• The TRRT are adequately skilled to complete the tasks</li> <li>• The equipment they carry is sufficient for the assigned tasks</li> <li>• Communication between agencies is established and maintained</li> </ul>
<u>4</u>	<ul style="list-style-type: none"> <li>• Field staff are adequately trained and equipped for their tasks</li> <li>• Health and safety better practice is maintained throughout the exercise</li> <li>• Information flows freely between IMT and field team</li> </ul>
<u>5</u>	<ul style="list-style-type: none"> <li>• The communications plan is implemented in a timely manner</li> <li>• The communications plan is flowed by all parties</li> <li>• The communication plan is adequate for the exercise</li> </ul>



# First Operational Phase

Following the call from Police Communications, the designated IC will take control of the operation. Forming their IMT and preparing resources for the first operational period. Using their knowledge and Readiness Plan for the area to help guide them in establishing the initial action.

## Initial Action

IMT mentors to guide and assist the IMT with the aim of implementing the following actions and documentation.

- Establish the ICP with appropriate resources (IMT).  
Completed
- Complete initial size up (AFCO)  
Completed
- Conduct Search Urgency analysis.  
NC – Discussed but not actioned
- Gather relevant initial information.  
C – Ongoing throughout operation
- Consult appropriate plans and procedures (Readiness Plan)  
C – Came out early and was used at Sar store store to start operation
- Prepare and (IAP) Initial Action Plan.  
C – IAP Inplace early
- Prepare and Implement Communications  
C – Commes established early Thursday and strenghtend over Friday Morning
- Prepare Information Collection Plan, gather information required to develop Missing Person Profile.  
C – Collection Plan in place on Friday morning
- Consult Lost Person behaviour book.  
? -
- Establish an initial search area using SARtrack showing:



Statistical rings  
Planning points IPP, PLS, LKP, DP's etc.  
Confinement locations  
ICP location

C- Delivered on D4H – Acetate & Maps

- Determine and complete Initial Action tasking forms.

Achieved

- Written on tasking pads or entered into D4H as exercise matured.

- Document Risk management process.
  - SAREX plan covers this, but IMT did not developed a SAREx Version during Operational Period
- Prepare GSMEAC briefing to deliver to Assets and a senior Police officer.

C – Good delivery by IC on operation and out comes to date to SAR teams arriving on Day 2.

- **Conduct preliminary** scenario analysis and written Scenario weighting.  
Scenarios developed but not extended to weighting to inform search direction  
(Possibly swamped by number of linear features)
- Commence relevant documentation and prepare a search file.

- Commence Operation log.

C – Being Carried out on D4H / SARtrack

- Prepare for an operational hand over for the second phase.

Injects 31<sup>st</sup>



## ICP

Let the IMT decide based on the Readiness Plan. However if they haven't concluded based what the plans suggest. Direct them to the Watercare Depo based in the Hunua's on Moumoukai Hill Road off Ness Valley Road.

## Communication

To follow SOP's and the Readiness plan for a SAR operation. However, if they haven't concluded based on what is suggested. Direct them to follow the AREC call out procedure and refer to the Readiness plan. AREC have completed a comprehensive comms plan for the Hunua's (Document attached for main file). We will also be introducing a SAR response manager role to be a liaison between AREC and LandSAR.

## Field Resources

Available for the first operational phase

To follow SOP's and Readiness Plan for a SAR operation. However, if they haven't concluded based what the plan suggest. Direct them to follow resources available for the area and to follow call out procedures based on operational requirements.

### Resources (1<sup>st</sup> Op phase)

- Police SAR
- LandSAR IMT
- AREC
- Airforce personal
- Council Rangers
- SERT (Consult only)

### IMT to consider the following resources for the Second Operational Phase (Reflect on the IAP)

- LandSAR
- SERT



- Westpac
- Eagle
- SSG Drones
- Police media

## Administration Resources

For the first operational phase the IMT will only have available the following admin resources.

- Own personal resources
- SAR police van
- What's available on the SAR computers.
- Readiness plan
- IMT provided with maps of the Hunua's

Further documents, like other maps and documents will become available throughout the operation based on IMT's requests.

## Weather

To be assessed by the IMP daily and if in a position to pre plan and print forecasted weather predictions.

## Locating and processing the LKP

The LKP will be at the carpark at the Upper Mangatawhiri Campsite GR 1791389 5893050.

This location will be given to the IC during the initial call from comm's. The information they will receive is that the local Ranger had located the vehicle in the carpark. Comms' may also advise that eagle had also done a fly over and confirmed the LKP.

- Vehicle (make and colour xxxxxxxxxxxx. Rego xxxxxx Registered to the police.
- For the scenario the vehicle will be registered to one of the missing parties. (inject false QVR and QP if requested by IMT)





The IMT's IAP needs to reflect this in their Objectives and Strategies for locating the LKP.

- LKP taskings to reflect the Strategies for locating the LKP.
- Information Collection Plan

#### Processing the LKP

Once the IMT has been set up and initial tasking done. If the IMT haven't tasked a team to process the LKP then they need to be prompt.

Once a team has been tasked to process the LKP they will be able to gain entry to the vehicle. (Keys to be handed over by member). They will find the following:

- Maps of the area highlighting all the huts and campgrounds in the area.
- They will locate a folder with emails between the teachers and the Council Ranger staff discussing their intentions to visit all the huts and campgrounds.
- They will also locate clues such as wrappers and cans of alcohol. These items will be left at certain huts.

#### Witness interviews.

- Informant (Head master at Whangarei High).

His statement will cover off timings and partial information relating to the reasons they in the Hunua's. He will also advise that the teachers had a PLB in their possession. (IMT should be requesting further information from the informant. This will be injected once requested).

- Partners. Only one of the partner was able to be contacted at the time.

She / he will advise that they are concerned as their partner was due back in Whangarei as they had a Doctors appointment. (IMT should be requesting Doctor details and further on medical condition)

- Council Ranger (Located vehicle)



He will advise that he located the vehicle at the campground and the engine was cold. That he was unable to gain access. He will further advise that he was aware that the teachers were in the Hunua's as Vanessa (office assistant) had told him. (IMT should be asking for Vanessas details copies of the emails between her and teachers will be injected when asked by IMT.

## Inquiries

- Police communications to take any instruction from SAR Coordinator and note them in the job text i.e Mobile located, Whisper txt (they do not act on the requests from the SAR Coordinator)

These comms inquiries will be handled by way of injects at the time.

## SAR Missing Person Report

The IMT mentors will have access to the Exercise Control Mater copies of the Missing Person reports and missing person summary. The master copies will not be disclosed, as the IMT need to work on establishing these reports on their own accord and to ensure they ask the appropriate questions. These reports can be used by the mentors to confirm or deny and relevant information or finds located by the search teams.

The first operational Phase should only consist of the following taskings.

- Set up repeaters for comms.
- Process the LKP.

Timings are going to be important as we don't want teams on tracks or searching huts on the 31<sup>st</sup>. The IMT will be advised early on that they have access to Airforce personal and that the Airforce have offered the use of the NH90. The objective is to have field teams winched into the huts in the area to process the scenes. The taskings should be ready to deploy early on Friday morning (Contingency will be to have teams walk into the locations)



# Second Operational Phase



IMT mentors to guide and assist the IMT with the aim of implementing the following actions and documentation.

- Receive an operational handover for some IMT members (this will be around 1400hrs on the Friday)
- Review Initial Action including the IAP.
- Implement and update IAP throughout operational phase.
- Review Information Collection Plan and Intel gathered.
- Review and gather information still required.
- Record, analyse, collate information displayed.
- Develop scenario in more details and update scenario weighting.
- Determine the search area, allocate Regions (POA) and complete weighting.
- Implement safety management system.
- Debrief search teams that were tasked in previous Op Periods (if required)
- Evaluate Search effort.
- Determine further taskings required.
- Prepare tasking forms.
- Brief incoming resources in GSMEAC format.
- Conduct planning meetings.
- Continue Operational logs.
- Prepare Demobilisation plan.
- Implement rescue plan.
- Continue to collate the Search file.

## Injects 1<sup>st</sup>

- List attached

## Field Resources



For the second operational phase the following resources will become available throughout the day. IMT to manage their input throughout the phase and deploy as they see fit.

- LandSAR
- AREC
- SERT
- SSG Drones
- Air Force
- Council Rangers
- Police media

## Witness Interviews

### Informant head master

- IMT to create a tasking for an enquiry unit to conduct a 4q at the informants address or school grounds to gather further information on the lost parties.
- Enquiries to be done with the NOK in Whangarei to build on the missing person profiles.
- Inquiries must be in written form (Tasking), reflected on the IAP and on the information collection plan.
- A job sheet / SAR Missing Person Report – mentors to determine the appropriate time to inject. (**Inject SAR job sheet and Missing person reports**)
- Information collected from the injects can be acted upon by the IMT, ie NOK of the teachers that hadn't been previously received.

## Next of Kin

For Geoff



- XXXXXXXXXXXXXXXX (Wife)  
DOB: XXXXXXXXXXXX  
Add:  
Ph: XXXXXX

For Daniel

- XXXXXXXXXXXXXXXX (Partner)  
DOB: XXXXXXXXXXXX  
Add:  
Ph: XXXXXX

For Kevin CRAWFORD

- CRAWFORD/Jennifer  
DOB: 05/02/1969  
Add: XXXXXXXXXXXXXXXX  
RD6 Whangarei  
Cell:

### Inquiries:

- Auckland Council Rangers station



The IMT will need to provide a written task of what information they require from the Rangers station. This will be handled by means of injects.

- [REDACTED]

The IMT will need to provide a written task of what information they require from the School, including details for the PLB and registration number. Will also get further details on the missing persons intentions.

- Media

Media release can be done by the media team. IMT will need to provide the necessary information for the Media team to post on social media and mainstream media. This must be in written form (Tasking), reflect on the IAP and on the Information Collection Plan.

- Medical

The missing party have provided limited medical conditions. These can be discussed in real time with SERT if the IMT deem it necessary. This must be in written form (Tasking), reflected on the IAP.

- Survivability

If the IMT request to speak with a survivability expert they can speak with DR Sara GORDON (Role play the phone call). They will need to provide all relevant information that Sara would require ie lost Party full details, Doctors details etc. In tasking format.

- Teams and Assets

IMT to check in with teams and act on any information obtained from the field.

- Bank



This will need to fall within business hours to fit in with the scenario. IMT may ask for bank account details. This can be tasked to a local unit for 4q's. Must be a written task. This will not be part of the initial missing person report, tasking needs to reflect in the 4q's. (Inject SAR job sheet)

- Social media

The IMT will need to request a media release via written request (Tasking). (Injects for messages received via social media)

## Third Operational Phase

IMT mentors to guide and assist the IMT with the aim of Implementing the following actions and documentation.

- Possibly implement a hand over of IMT staff / not the IC at this stage.
- Review the 2<sup>nd</sup> Operational Phase including the IAP.
- Implement and update IAP throughout operational phase.
- Review Information Collection Plan and Intel gathered.
- Review, analyse, collate, and display information, may include but not limited to. Information collection planning, intel analysis, timelines, associated charts, comprehensive subject profile and investigation plan.
- Develop scenario weighting.
- Review search area, allocate regions.
- Implement safety management system.
- Debrief search team.
- Evaluate Search effort.
- Determine further taskings required.
- Prepare tasking forms.
- Brief incoming recourses in GSMEAC format.
- Conduct planning meetings.
- Continue operational log.





- Implement rescue plan.
- Prepare and Implement Demobilisation Plan.
- Continue to collate the search file.

## Lost Party

Exercise control to monitor lost person welfare and location throughout the exercise.

- Kevin CRAWFORD

Kevin is the injured teacher that fell off the track and requires the TRRT extraction. He will activate his PLB on the Saturday morning at around 0600hrs. Air desk will call the IC and notify them of the activation and provide coordinates. The IC will be advised that Westpac has flown over and are unable to winch due to tree cover. They request the Police TRRT to assist their medic to get to the patient. Kevin has expected spinal injury (until he is examined by a medic). There will be no need to a stretcher extraction from the base of the waterfall up to the track. IMT are to manage and implement their rescue plan as per the IAP. The rescue of Kevin will be conducted in real time (no exercise short cuts will be taken) ie first aid, stretcher carry, rope haul, patient care, and will only end following a missing person interview by IMT to gather further relevant details of the other two missing persons.

This rescue will cover off the one of the objectives, to check the capability of the TRRT and their limited gear when using Westpac. They will be dropped off by Westpac approximately 800 meters from the injured party. They will make their way by foot to his location. The IMT may decide to send the remaining TRRT members to Piggotts Hut. They would be able to drive to this location with additional gear if required.

Once interviewed, Kevin will give a location where he separated from the other two, after xxxxxx experienced shortness of breath.

- Geoff and Daniel

Geoff is the teacher that was experiencing chest pains and shortness of breath. He and Daneil will be upstream along the Mangatangi Stream. The IMT will be informed by Kevin that he separated from them near the Workman's shelter. That they had walked down a



stream, as they had planned on a orienteering exercise for the school kids. Once in the stream Geoff started experiencing the pains. He was still mobile but only able to move very slowly. That's when they decided to send Kevin to notify the school and family that they would be late. IMT to manage field team to access the area and conduct a search. They will be located half way down the stream approximately 3km from the Mangatangi forks.

IMT will need to make arrangement for a SERT member to make an assessment before they move Geoff.

## Demobilisation

IMT to implement their Demobilisation Plan, using operational knowledge and the Readiness Plan.

- Part of the demobilisation plan should be that the IMT needs to advise all agencies / work groups of the outcome of the search.

## Contingency

Document attached.

## Huts and Camp Grounds in the Hunua's



The Hunua's has the following Huts and campgrounds available to members of the public. They can be booked via their website.

### **Campgrounds**

Map below with campgrounds circled.

- Repeater (has a hut in the campground)
- Upper Mangatawhiri
- Lower Mangatawhiri
- Piggotts (has a hut in the campground)
- Workman

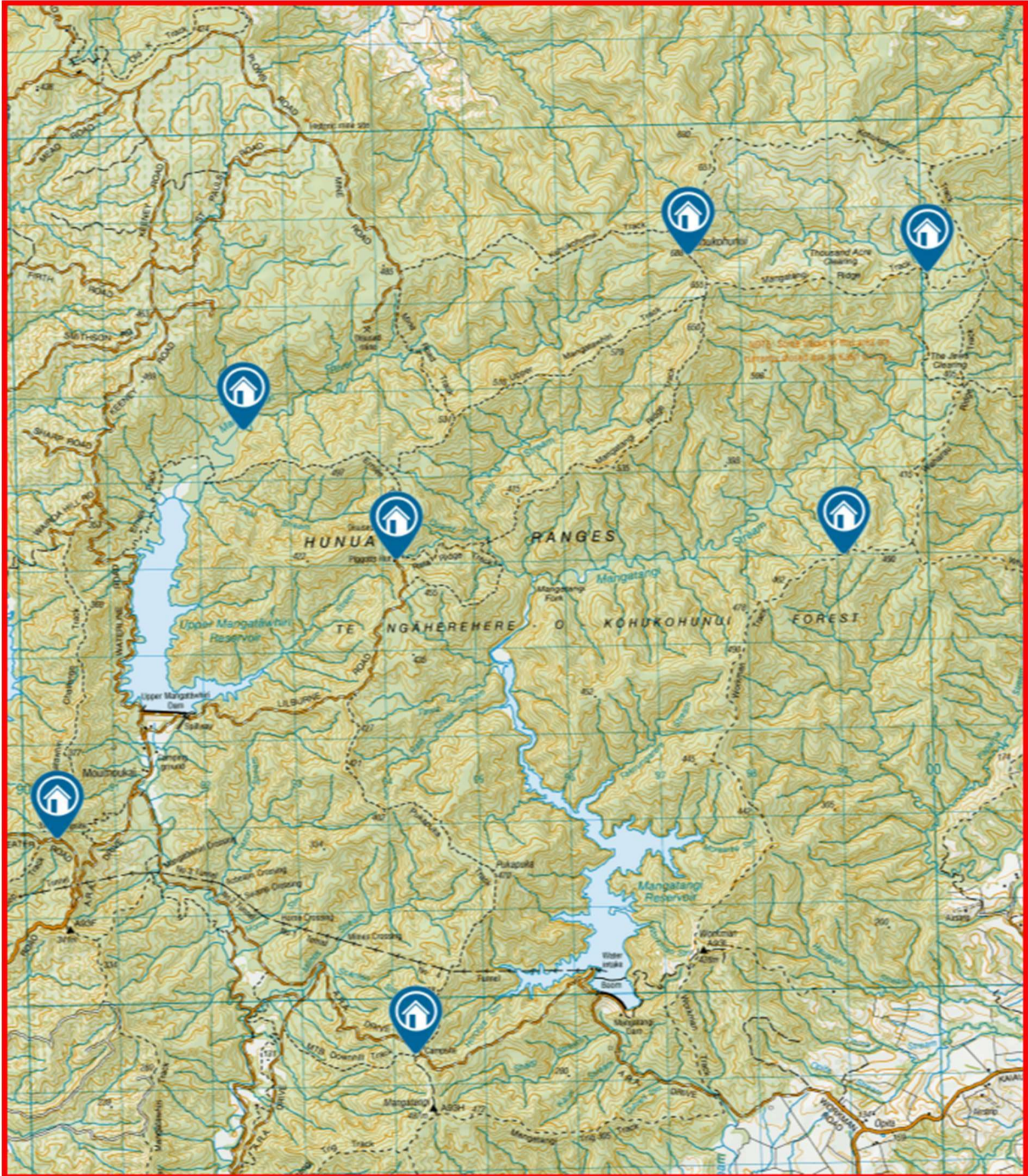
### **Huts**

- Hut in the Kokako Management Area (KMA) volunteers regularly use (known as the Kokako Café). It is situated along the Kohukohunui Track. *As per below map.*
- There is also the Trig K Hut - <https://hutbagger.co.nz/huts/trig-k-hut>  
<https://tramper.nz/1543/trig-k-hut/>

The following link takes you to all the huts in the Hunua's



<https://www.aucklandcouncil.govt.nz/parks-recreation/Pages/park->

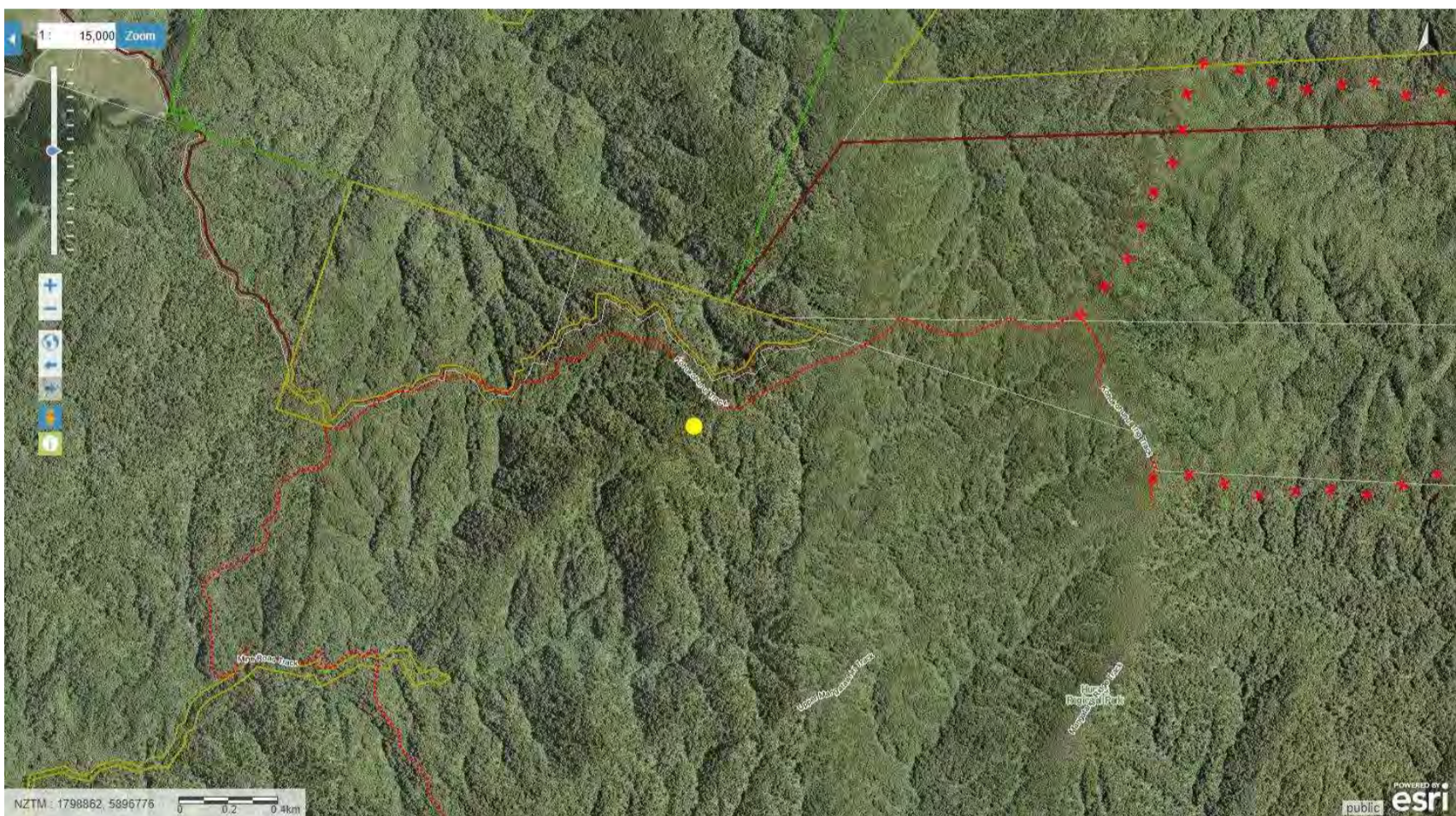


[details.aspx?Location=213#stay](#)



## Kokako Café

Location of the Kokako Café a Council Hut not published  
Hut is locked and code for access is [REDACTED]



Coordinates for this hut [REDACTED]  
Code to open is listed below.

Coordinates for all huts listed below:

Coordinates:

- |  |                   |
|--|-------------------|
| ● Repeater (has a hut in the campground) | E1789291 N5891927 |
| ● Upper Mangatawhiri                     | E1791389 N5893050 |
| ● Mangatangi Trig shelter                | E1794232 N5889377 |
| ● Piggotts (has a hut in the campground) | E1794126 N5895059 |
| ● Workman                                | E1799063 N5895021 |
| ● Kokako Café                            | [REDACTED]        |
| ● Trig K Hut                             | E1797440 N5898510 |
| ● Thousand acre                          | E1800055 N5898245 |



## Access to facilities

### Auckland Council / Ranger facilities

#### **Gates:**

- Moumoukai Hill Road – combo code [REDACTED]
- Upper Mangatawhiri – Watercare key only
- Ara Road gate [REDACTED]
- Upper Mangatawhiri camp ground gate [REDACTED]

#### **House access details:**


- [REDACTED]
- [REDACTED]

*\*please leave keys in the lockboxes whilst not in the accommodation – less risk of losing*

- Kokako Café code for the locked door is [REDACTED]



The Moumoukai Hill Road lock system as shown below. The locks need to be kept in the same positioning as photographed. The combination lock needs to be closest to the post.

Moumoukai Hill Road lock system configuration: 





ARA Road gate –







## LZ (Landing Zones)

The landing zone as per the below photo has been approved by the Auckland Council Rangers. This LZ is also used by the Rangers and they have large fuel trucks that access the area. The Airforce have also been to the site and confirmed it would work for their larger airframe the NH90.

The coordinates for the LZ being: 1792610 5890214





## Winch Zone for the TRRT drop off

The below area has been identified as an area that is safe to winch members of the TRRT into an area to rescue a patient (Part of the SARex). This area is known as the Mangatangi forks. This area meets the Westpac training guidelines in relation to area and surface.

The coordinates for the winch zone being: 1795628 5894790





## Potential Hazards in the area

Possible Hazards to be aware of in the area.

- Hunters controlling pests
- Trucking – Log trucks dates to be confirmed around Ploughs road.
- Weather – to be checked and confirmed prior to the exercise commencing.
- Wasps in the area.

# Kia tūpato

## Caution

Animal pest control  
programme in progress.

*Hunua Pig Control  
Hunters, Dogs & Firearms  
May be present  
18/8/24 – 30/11/24*

Mō ētahi atu kōrero, whakapā mai ki Te Kaunihera o Tāmaki Makaurau i 09 301 0101  
For more information, please contact Auckland Council 09 301 0101



External agencies contacts:

Contact personal relating to the exercise:

<u>Agency</u>	<u>Contact person</u>	<u>Phone number:</u>
Westpac	Mark CANNELL (AKA Tinny)	
Council Rangers	Vanessa (office assistant)	
	Rhys HEATLEY (Ranger)	
Watercare	James TALBOT (Manager)	
	Brendon DOCKARY	
Airforce	Demelza Challies-Kolk (FLTLT)	
	Muzz	
SERT	Ryan BIGGAR On call No.	
AREC	Richard GAMBLE	
LandSAR	Paul TREDAWAY	
RCCNZ	XXXXXXXXXX	



SARex Evaluator

Kip MANDENO

