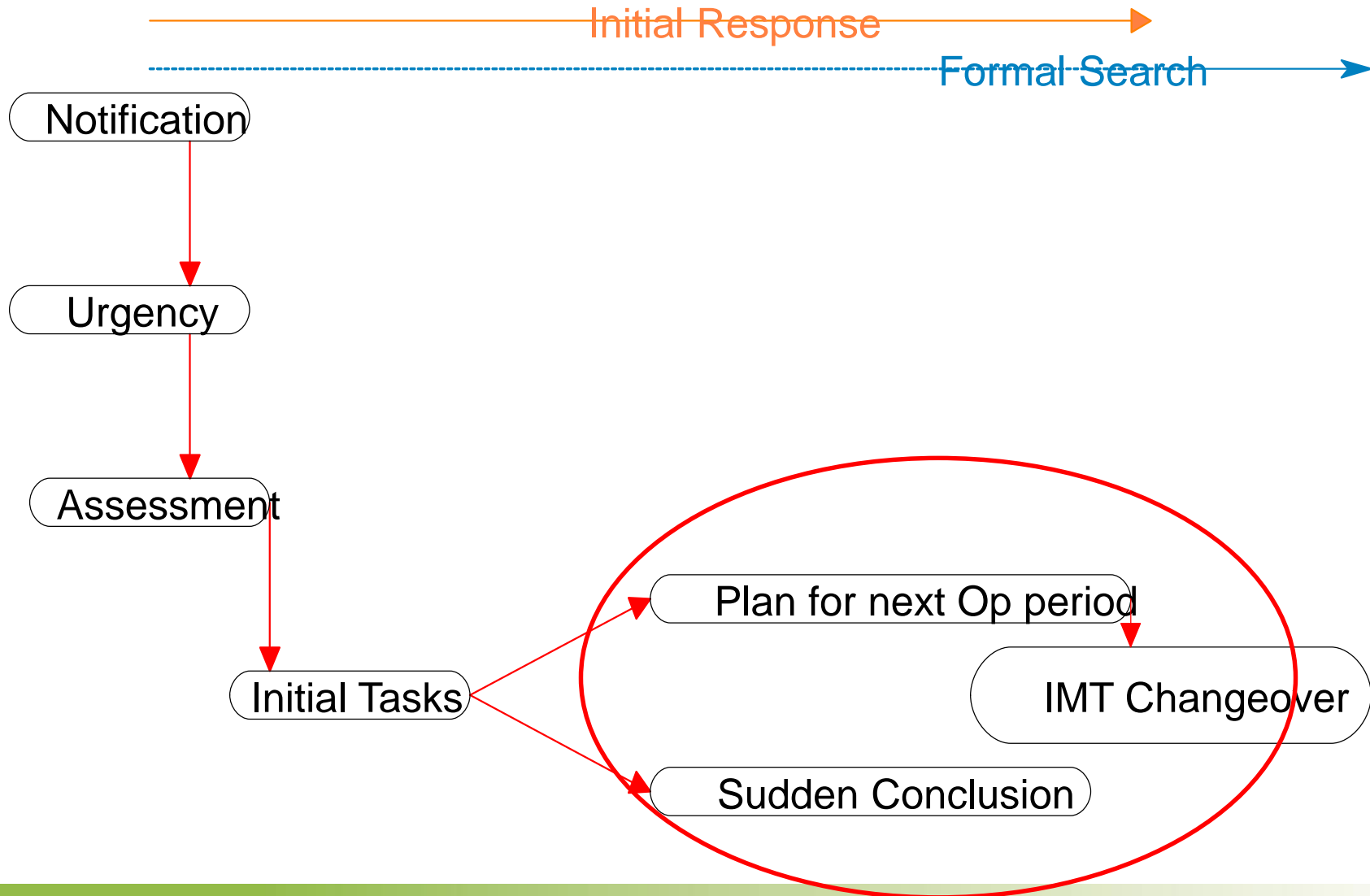


# Establishing the Search Area

Preparing the transition to formal  
planning and the next operational  
period



# Manage the Initial Response



# Initial Response Process

## **Initial Response – Initial tasking.**

- Notification
  - Urgency determination
    - Initial IAP
      - Initial tasks

## **Initial Response - Transition to formal search**

- Scenario analysis by consensus
  - Search area determination
    - Subdivide and allocate POA
      - IAP for next operational period

# Establishing the Search Area

## Standard methods

- Theoretical
- Statistical
- Subjective
- Deductive

# Boundaries

**Boundaries must be identifiable both in the field and the IMT.**

- **Existing man made structures:**

Roads, Tracks, Fences, firebreaks, railway lines....

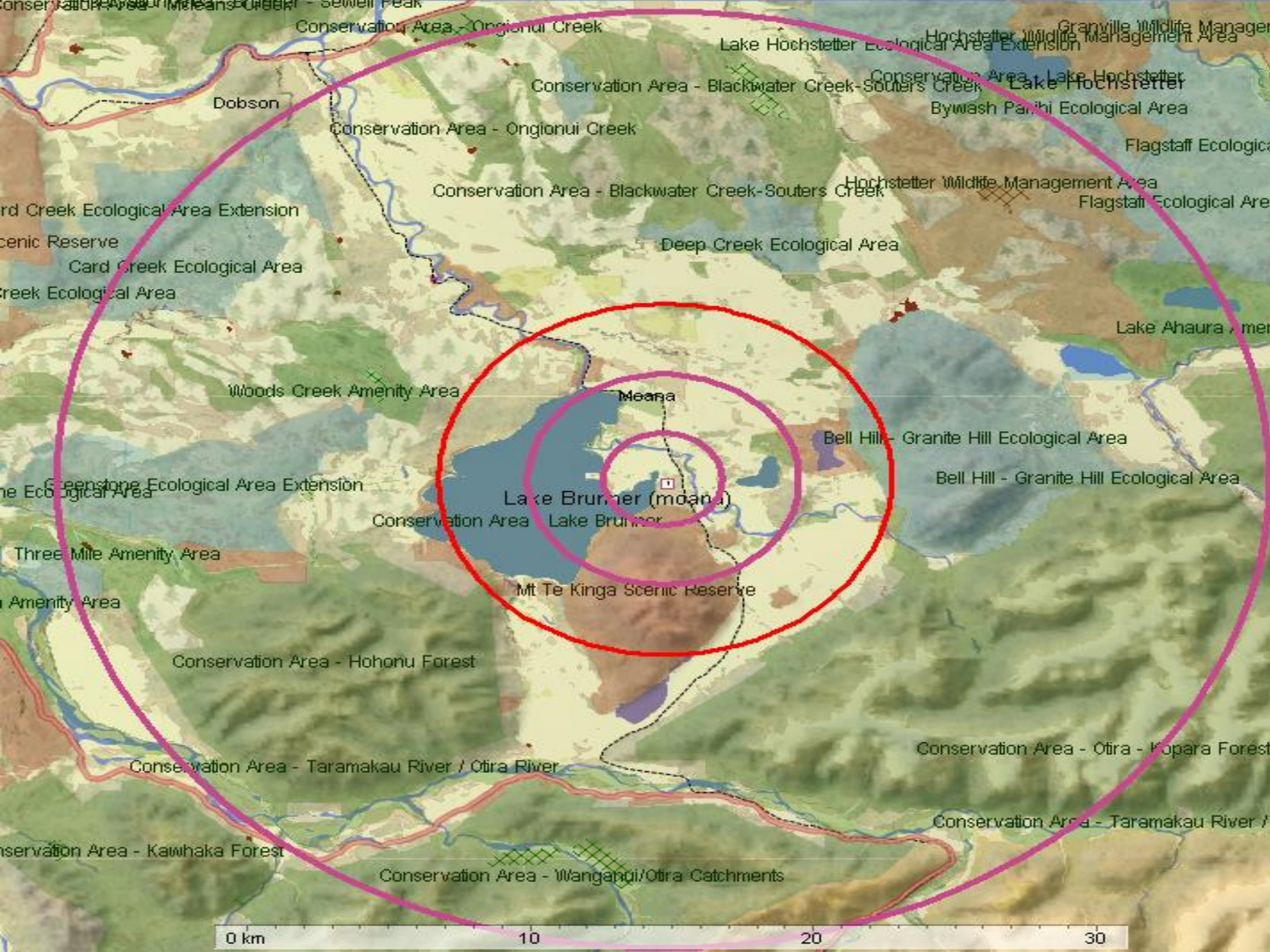
- **Natural**

Creeks and waterways, bluffs, ridge lines, vegetation changes, landscape features eg swamps and scree slopes

- **Improvised**

String or flag lines, contour lines, compass bearings

**Do not use statistical rings as search area or segment boundaries**





0 km

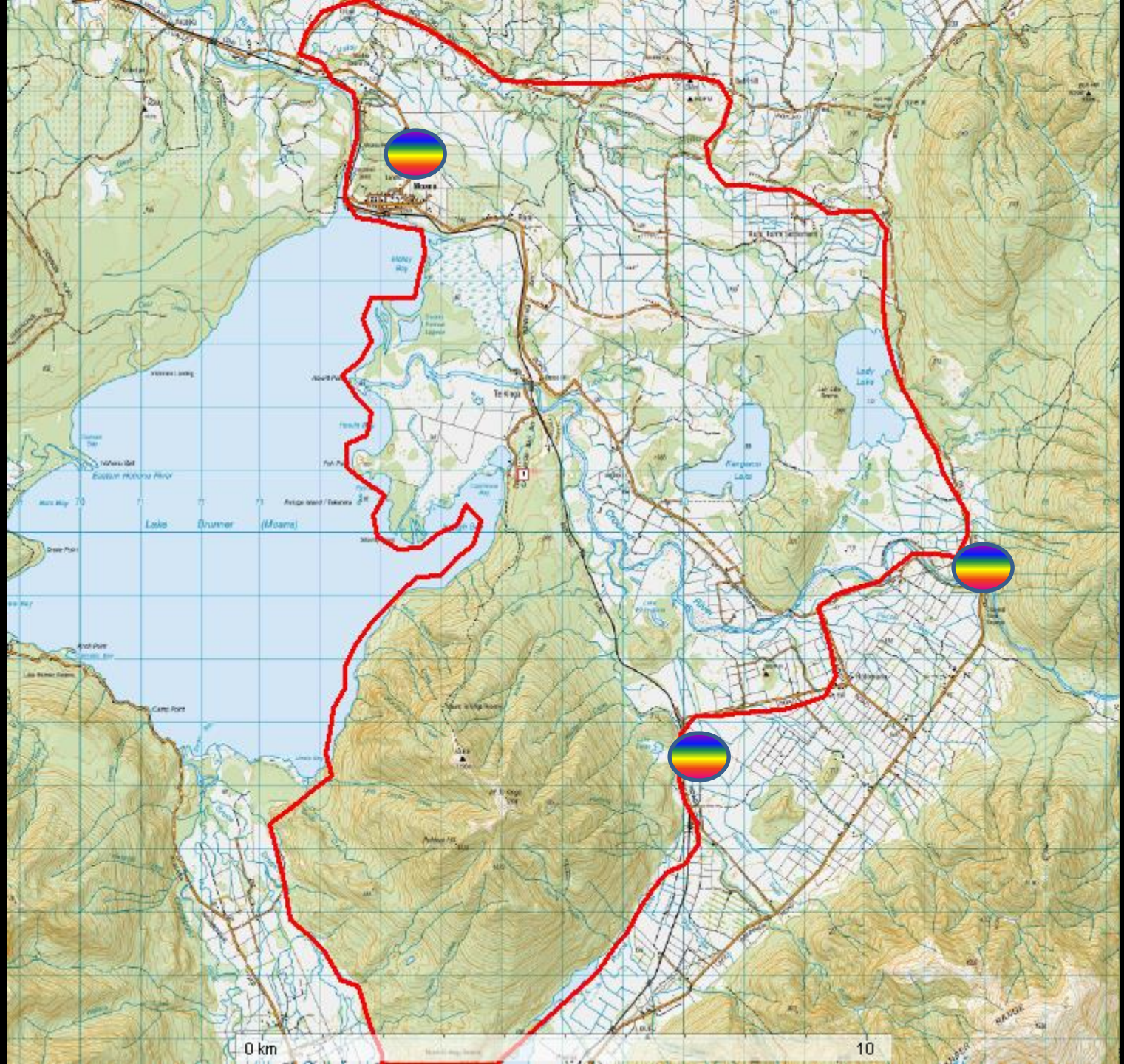
10



0 km

10





0 km